

# RELOC<sup>®</sup> Wiring Solution for Access Floors



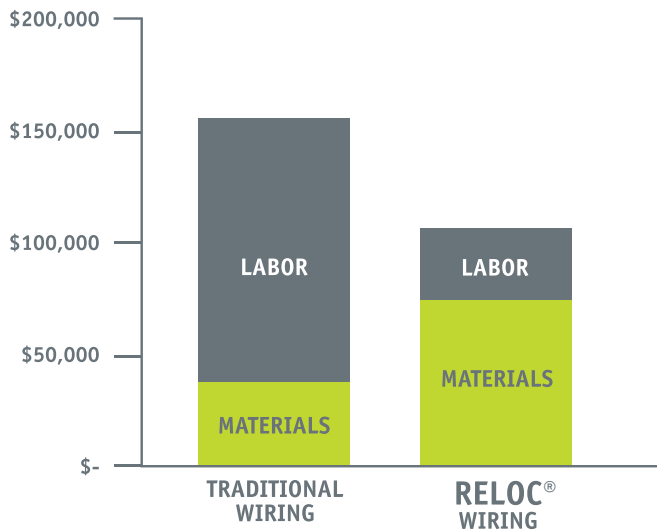
Realize the full benefits of  
access floors with RELOC<sup>®</sup>





# The RELOC<sup>®</sup> Advantage

## RELOC<sup>®</sup> Initial Installed Cost Comparison



## Only with RELOC<sup>®</sup> can the full benefits of access floor design be realized.

Today's building designs are becoming increasingly more focused on adaptability, as the need to reconfigure commercial space to accommodate changing needs is paramount. Adaptable building design is achieved through the use of access floors where electrical power, data, telecom and HVAC systems are located below the floor. These optimally distributed systems are more cost effective, providing easy accessibility for installation, maintenance and re-configuration.

To fully gain the flexibility that access floor solutions offer, a modular wiring system that can be easily reconfigured should be included. A RELOC<sup>®</sup> wiring solution for access floors provide the advantage of greater flexibility at a lower installed cost.

## Advantages of the RELOC<sup>®</sup> Access Floor Solution:

### LOWEST TOTAL INSTALLED COST

The RELOC<sup>®</sup> wiring solution offers components that snap together quickly and easily, significantly lowering the installation cost for both the contractor and the building owner. **Access floor installations that include RELOC<sup>®</sup> wiring can save up to \$2 per square foot over the installed cost of conventional construction.**



---

## LOWEST OPERATING COSTS

---



Access floors and the use of RELOC® wiring can provide lower operating costs in several ways. Energy costs can be reduced by up to 30% with under floor air distribution.

Moves, adds, changes and maintenance are easy with convenient access to the under floor system. The modular construction of both access floors and RELOC® are 100% reusable, providing additional savings for renovation and retrofit projects. **RELOC® also offers an annual tax savings through accelerated depreciation. Clearly money is being saved over the life cycle of the building.**

---

## BETTER PROJECT MANAGEMENT

---



Modular installations reduce construction cycle time, allowing for better project management and utilization of labor. This helps to keep projects on time and within budget.

---

## SAFETY AND RELIABILITY

---



RELOC® is 100% factory assembled and tested. This assures product reliability and decreases wiring errors. Because installations are quicker and easier, risk of injury to the installation crew are reduced, thus increasing job safety.

---

## SUSTAINABILITY AND LEED POINTS

---



RELOC® products are a greener solution than traditional wiring, as they minimize installation time and construction waste while maximizing productivity, reusability and the use of recycled materials.

Please see [www.acuitybrandslighting.com/sustainability](http://www.acuitybrandslighting.com/sustainability) for more information.

**RELOC® is**  
**100% reusable**  
**and relocatable**





2

2

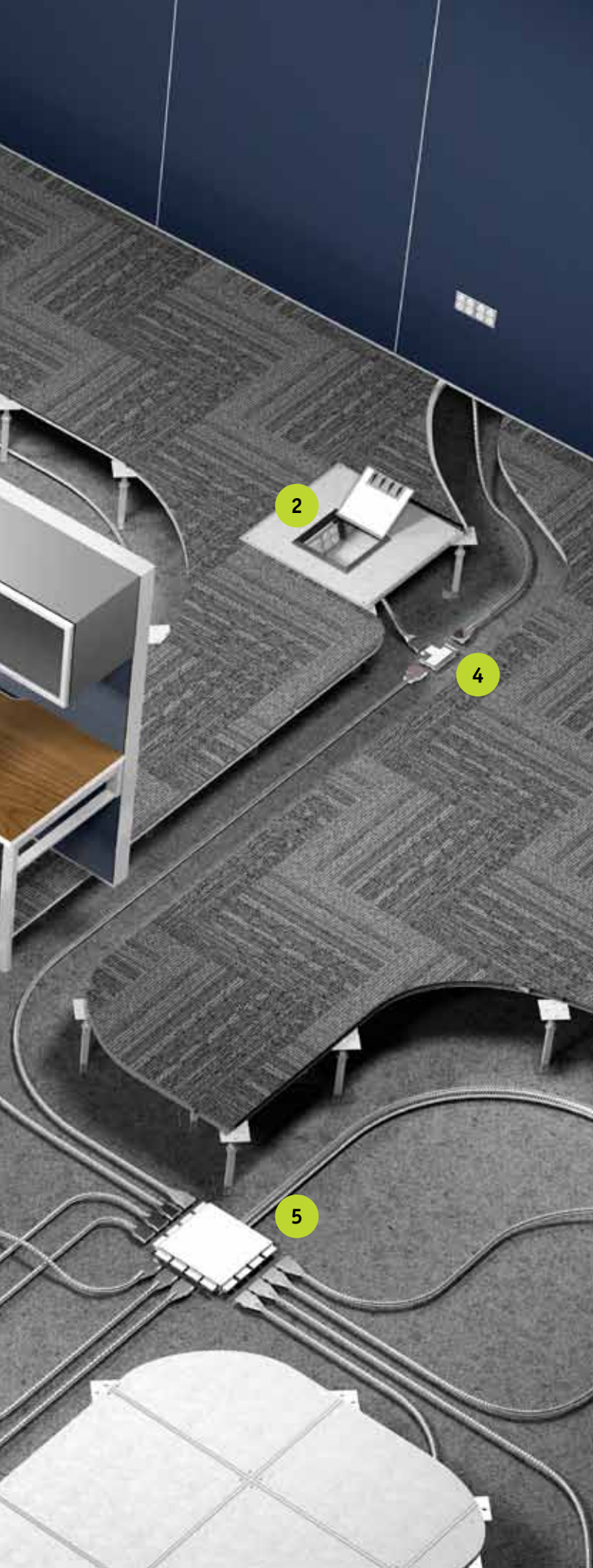
3

2

1



# RELOC<sup>®</sup> Modular Wiring Solution For Access Floors



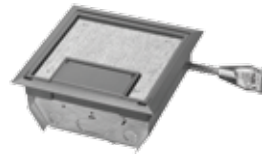
1



## Drop Cable - DC

Provides integration of other electrical devices into the 820 system, such as power outlets. Conventional pipe and wiring is not required to convey wiring.

2



## Floor Modules

Available in square, rectangular or round shapes with a variety of power and data configurations, depths and finishes to meet the requirements of almost any application.

3



## Cable Extender - CE

Male/female cable that provides additional length anywhere throughout the 820 system.

4



## Splitter Splice - SS

Used to split branch circuit into two directions in commercial or power applications.

5



## MainRun Cable - RMC




Maximizes labor savings and flexibility by distributing circuit from the electrical panel to the home run location. Include the primary distribution box with RELOC<sup>®</sup> starters.

# RELOC® Access Floor Modules:



RELOC® floor modules are designed for a variety of raised floor applications. These versatile outlet boxes provide easy access to power and data connections located out in the workspace. Pre-wiring with RELOC® systems allow them to be quickly relocated based on the changing needs of the business.

- Models available in square, rectangular or round shapes
- Variety of depths to accommodate floor heights from 2.5" in depth & up
- Power and data configurations available from three to 10 gang
- Square and rectangular models include recessed lift for carpet inserts

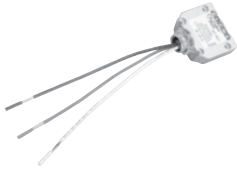
RAISED FLOOR MODULE PRODUCT OFFERING						
Shape	Square		Rectangular			Round
						
Family	FMS40	FMS56	FMR25	FMR40	FMR40P	FMRD60
Depth	4.0"	5.625"	2.5"	4.0"	4.0"	6.0
Finishes	Black Brown Beige Gray	Black Brown Beige Gray	Black Brown Beige Gray	Black Brown Beige Gray	Black	Black
Cover Flange Material	Polycarbonate	Polycarbonate	Polycarbonate	Polycarbonate	Polycarbonate	Polycarbonate
Cover & Body Material	Steel <sup>1</sup>	Steel	Steel	Steel	Polycarbonate	Steel
Max. # of Devices/Panels	3	10	4	3	5	3
Access Floor Cut-out	7 15/16" x 7 15/16"	9 5/6" x 9 5/6"	7 15/16" x 10	7 15/16" x 10	6 1/4" x 10 5/8"	8 1/4" to 8 3/4"

Notes: 1. Optional aluminum or brass cover finish

# RELOC® System 820

The RELOC® 820 system provides a full-featured, three-phase wiring solution for lighting and power applications. The small connector heads make it ideal for use in tight quarters and small raceways. With the full family of 820 products, any branch circuit can be quickly and easily wired.

## System Components



### Circuit Distributor - CD

Provides interface between hardwiring and the RELOC® 820 system. Conventional wiring methods bring power from panel to home run location, where CD is installed.



### Power Tee - PT

A through-wired component that makes it possible to select which branch circuit conductor feeds a specific device. Also provides power to devices used on convenience power, access floor systems and commercial lighting.



### Cable Extender - CE

Male/female cable that provides additional length anywhere throughout the 820 system.



### Splitter Splice - SS

Used to split branch circuit into two directions in commercial or power applications.



### Drop Cable - DC

Provides integration of other electrical devices into the 820 system, such as access floor modules and power outlets.

## MainRun Cables

RELOC® wiring solutions offers a variety of product components to extend your savings back to the panel. At the heart of this offering is the RELOC® MainRun Cable (RMC) product. It significantly improves onsite productivity, creates construction consistency and enhances product safety. RMC helps get the job done in less than one-third the time compared to traditional wiring methods. Typically, the RMC is pre-wired to a Primary Distribution Box with RELOC® starters.

## Key Features

- 50'-350' in length
- Flexible Metal Conduit with 12 AWG – 8AWG Hots
- Super-Naturals: 10AWG – 6AWG
- 4-20 total conductors
- Optional pull tape makes future circuit additions fast and easy





**Government Buildings**



**Call/Data Centers**



**Casinos**



**Office Buildings**

# Applications

RELOC<sup>®</sup> access floor wiring solutions are ideal for a wide range of applications. Benefits of a RELOC<sup>®</sup> solution include:

- Lower Installation Costs from Reduced Labor Time
- Easy Moves, Adds and Changes to Reconfigure Work Stations and Furniture
- Annual Tax Savings Through Accelerated Depreciation
- Products are Reusable for Renovations or Remodels